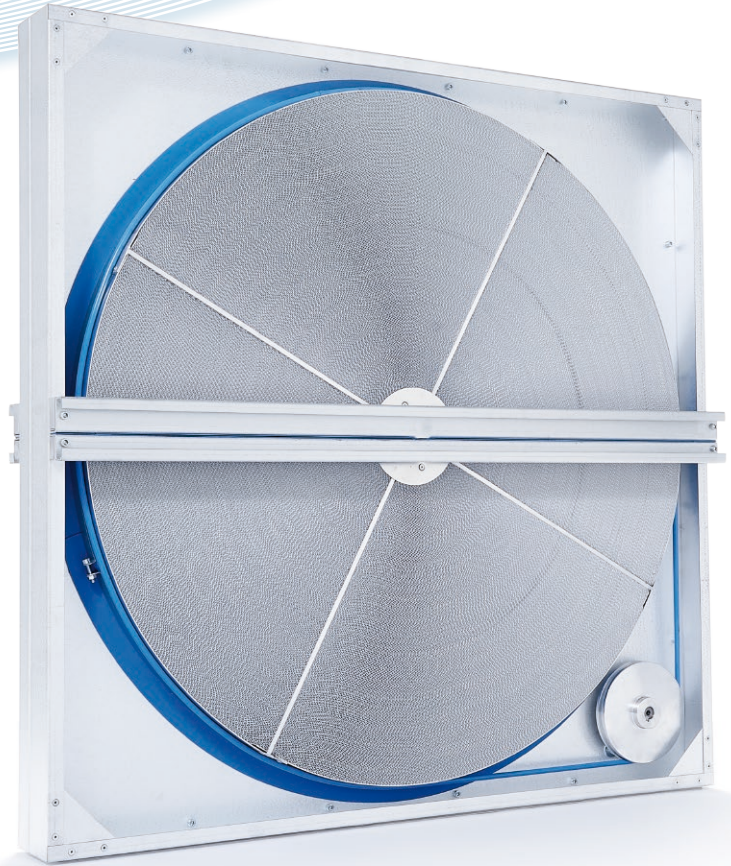


# New RRA

## **RRA - The new high performance rotor for highest tightness requirements**

Designed for air handling units the RRA provides striking advantages:

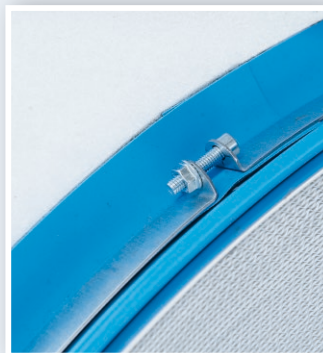
- Highest air tightness on the market due to construction and new innovative twin-contact seal system
- Small housing-wheel ratio, therefore bigger wheel diameters are possible which results in higher efficiency and lower pressure drop.
- Small housing depth (wheel depth + 90mm) for example: wheel 200 mm + housing 90 mm = 290 mm total housing depth.
- Installation in all positions and angles possible
- Housing made out of galvalume or galvanized steel
- Robust construction
- Up to 2000mm housing size. Sizes are tailor made in 1mm increments based on your needs
- Available with all wheel executions (sensible only, epoxy coated, HUGO Enthalpy)
- Max. allowed pressure difference: 1200 Pa
- Temperature limits: -30°C - 80°C, resp. -22°F - 176°F



*Rotary Heat Exchanger RRA (patent pending) in undivided execution*



*Highest air tightness on the market due to construction and new innovative twin-contact seal system*



*Small housing depth  
(wheel depth + 90mm)  
for example 100 or 200 mm + 90 mm*